

# Model 2000 Voting Booth

**ASSEMBLY & SET-UP INSTRUCTIONS**

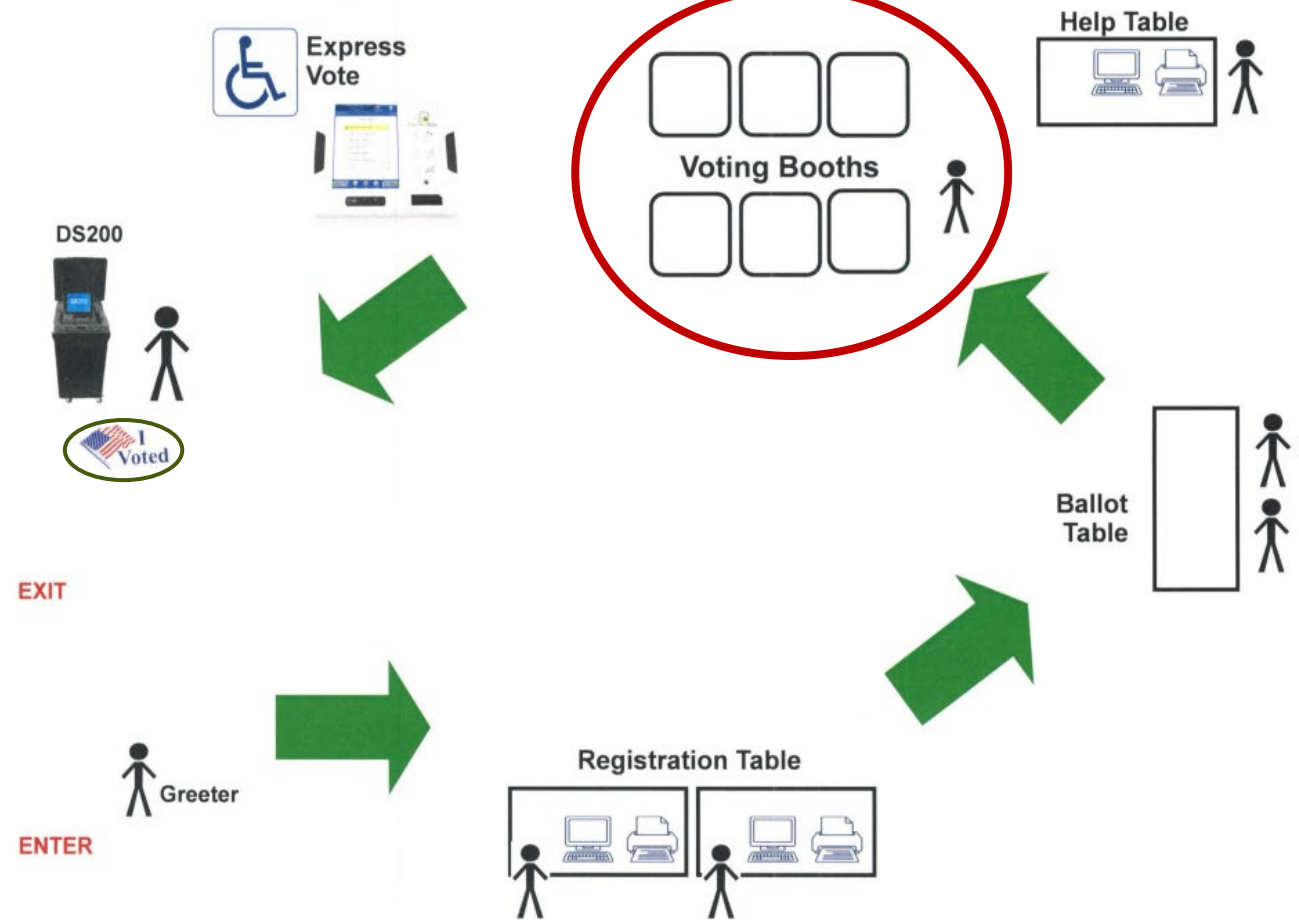


# Assembling a Voting Booth

- ▶ Watch the instructional video
  - ▶ <https://youtu.be/WUNRQCp7cw0>



Polling Place Voting Enclosure Sample Layout



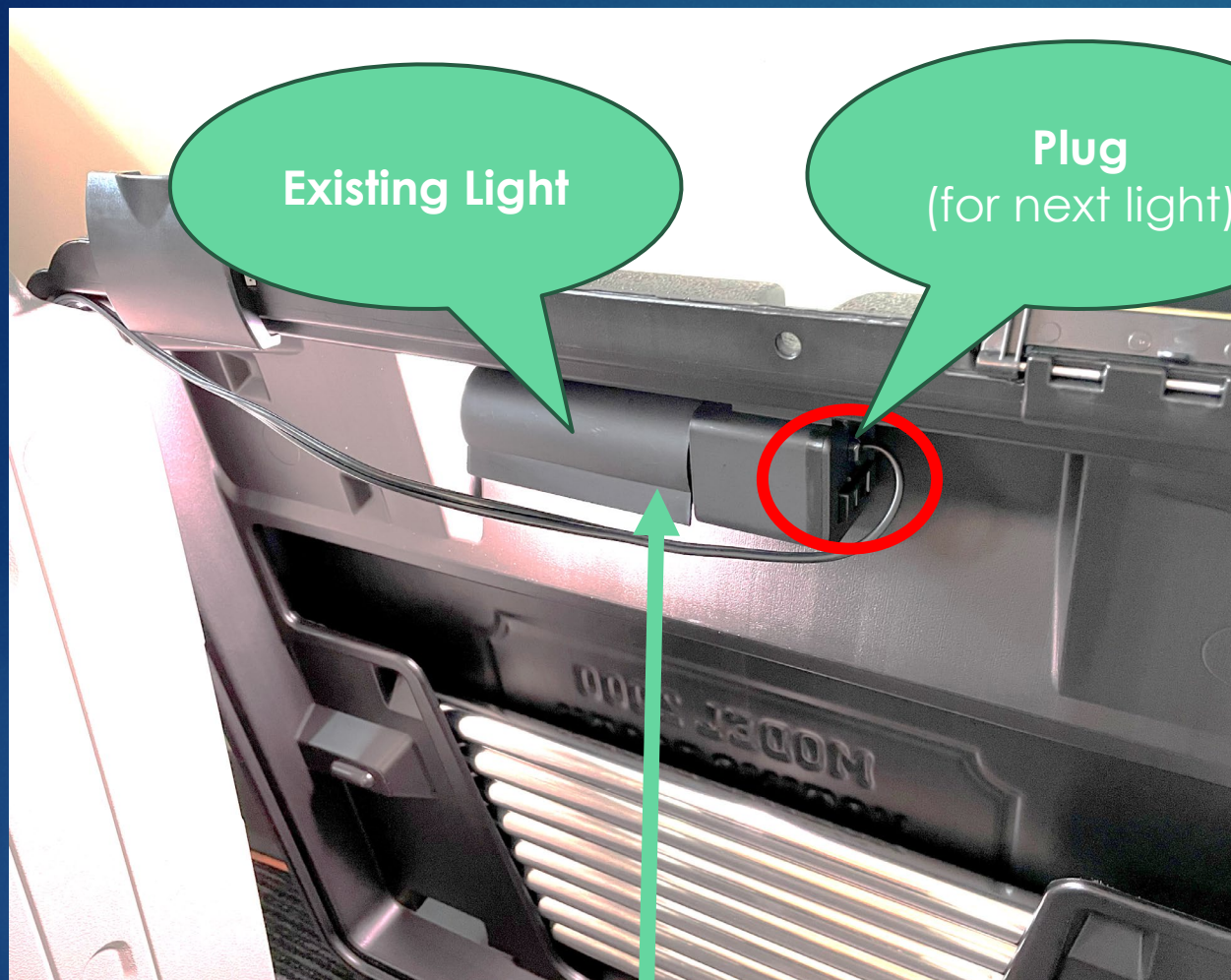


# For Voting Booths with Lights

- ▶ Precincts 11 and 19 only
- 1. Assemble booths as outlined in the previous slide.
- 2. Once each booth is assembled, plug in the first booth that is closest to the wall or to an extension cord so it has power.
- 3. Take the power cord from the next booth and plug it into the right side of the light of the first booth.
  - ▶ See example on next slide.
- 4. Repeat step #3 until all booths are “daisy chained” together.
  - ▶ If you want to have more than 1 row of booths, repeat step #2 first on new row.
- 5. AVOID TRIP HAZARDS!







Existing Light

Plug  
(for next light)

Light Cover  
(Rotates to Adjust Brightness)

Full Set-Up Example  
(daisy chain)

